

TAMPOPRINT®

ROTARY PRINTING UNITS -SERIES



TAMPOPRINT®
TAMPO PRINTING MACHINES
ACCESSORIES
SERVICE

Specialty from the company TAMPOPRINT®

Rotary tampon printing since 1981

Worldwide established

technologies for your future
made in germany

ORIGINAL

TAMPOPRINT®

Tampon printing machines
Laser systems ALFALAS®
Automations

STANDARD

ROTARY PRINTING UNITS -SERIES

MADE IN GERMANY



Since 1981

The rotary tampon printing is a special variant of the tampon printing and since 1981 a specialty of our company. By arranging several rotary tampon printing units one after another, high-quality multicolour prints can be produced.

The rotary printing is used for cylindrical and plane moulded parts or partial surface areas.

Beside of the colour transfer for marking and decoration print images, in the rotary tampon printing also primer, medication, glue, infrared absorbing lacquers and much more are transferred on different surfaces.

We offer 3 different integrated printing units and a stand-alone solution for you to choose from.

The integration position of the rotary tampon printing units displayed here depends on the process of our customers.

The "RTI 21-150 - H"

Horizontally working rotary printing unit which is specifically suited for use in any kind of automated systems. Built into all Rotoprint and Continua automated systems since 2012 as the successor to the proven "RTI 2000". Set-up time optimised by the simple method of setting the registration positions and the contact pressure without tools.

The "V-RTI 2000" & "H-RTI 2000"

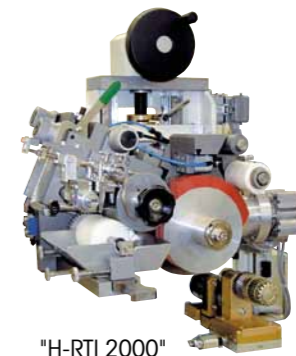
Horizontally or vertically operating rotary printing units. By means of this positioning, the products delivered can be printed from above or from the side. Particularly for cylindrical and vertically standing parts, the "V-RTI 2000" is the ideal printing unit.

While planning printing processes within the limits of a de-risking project, cliché material and printing inks as well as printing tampon form and printing tampon material will be determined and can be represented in a 24/7 running production with a machine availability of > 95%.

WITH SURFACE ADHESION



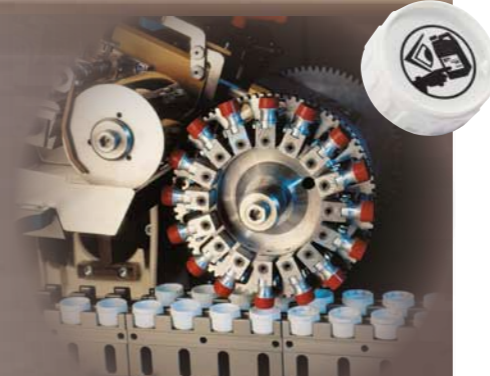
"RTI 21-150" Horizontal integrated rotary printing unit



"H-RTI 2000" Horizontal integrated rotary printing unit



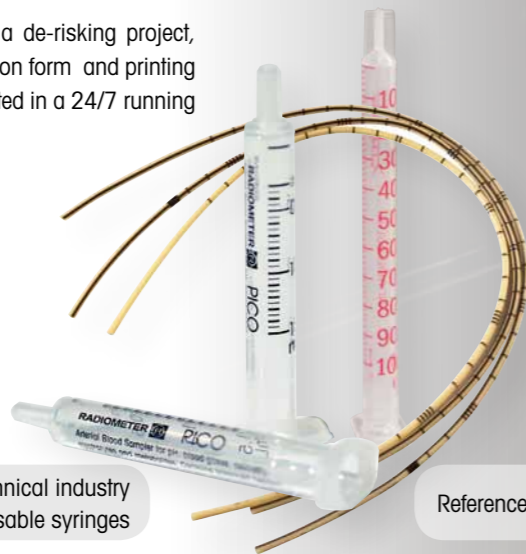
"V-RTI 2000" Vertical integrated rotary printing unit



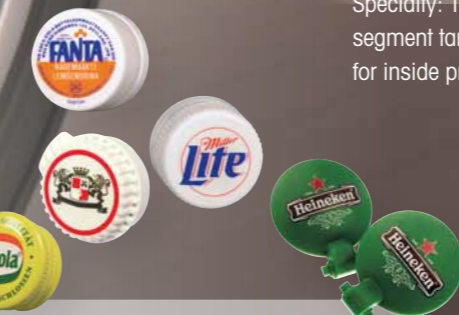
Specialty: Tampon wheel with segment tampons for inside printing



Reference: Medical-technical industry Disposable syringes



Reference: Automotive industry



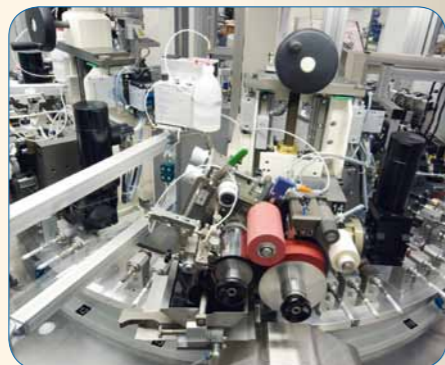
Reference: Beverage industry



Reference: Steel industry



Reference: Technical parts





Tampon rollers for any application case from our own production



Cliché cylinders from our own production using latest technology



Tampon printing inks exclusively at TAMPOPRINT®, specially matched to the rotary tampon printing

Rotary tampon printing unit		RTI Kompakt II E	RTI 2000 "V"	RTI 2000	RTI 21/150 - 25/40	RTI 21/150 - 40/40
Art. No.		01 00 73	01 04 20	01 04 00	01 04 40	01 04 42
Ink residue pick-up system		optional	optional	optional	integrated	integrated
Single cycle		yes	-	-	-	-
Multiple printing		yes	-	-	-	-
Continuous run		-	yes	yes	yes	yes
Piece counter		yes	-	-	-	-
Variable speed control		yes	external	external	external	external
Printing speed	m/min	20	40	40	40	40
Registration adjustment axial	mm +/-	2	5	2	2	2
Registration adjustment radial	Degree +/-	optional	4	3	4	4
Adjustment travel vertical	mm	100	10	150	150	150
Variable doctoring contact pressure		yes	yes	yes	yes	yes
Cliché size Ø x Width	mm	100 x 100	Ø 90-100 x 100	100 x 100	100 x 100/150	100 x 100/150
Print image size max. Width x Length	mm	80 x 240	80 x 314	80 x 314	80/130 x 314	80/130 x 314
By using special assembly groups the print image size can be considerably increased.						
Tampon roller Ø	mm	201	201	201	201	201
Cliché shaft diameter	mm	25	25	25	25	40
Tampon shaft diameter	mm	20	25	40	40	40
Drive		electro-mechanical	w/o its own drive*	w/o its own drive	w/o its own drive	w/o its own drive
Drive via tooth wheel, tampon shaft		-	-	optional	optional	optional
Motor drive		-	-	optional	optional	optional
Chain drive		-	-	optional	optional	optional
Connected load	kW	1,0	0,025 (ink supply)	-	-	-
Power supply	V/phase	230V/1/N/PE	400V/3/PE (ink supply)	-	-	-
Power frequency	Hz	50-60	50-60 (ink supply)	-	-	-
Control		PLC	external	external	external	external
Control voltage	V	24	external	-	-	-
Prefuse	A	16	external	-	-	-
Pneumatic supply fine filter 5 µm	bar	6	6	6	6	6
Air consumption/cycle	NL	0,5-1	0,1	0,1	0,1	0,1
Width	mm	1200	416	730	720	720
Depth	mm	880	552	540	540	540
Height	mm	1735	490	700	700	700
Weight	approx. kg	340	42	85	118	118

* optional drive possibilities



Dealer:

TAMPOPRINT® AG

Lingwiesenstraße 1
70825 Korntal-Münchingen, GERMANY
☎ +49 7150 928-0
Fax: +49 7150 928-400
E-Mail: info@tampoprint.de

"Ventes et Affaires Françaises"

☎ +49 7150 928-144
Fax: +49 7150 928-432
E-Mail: ventes@tampoprint.de
http: www.tampoprint.de

TAMPOPRINT® INTERNATIONAL CORP.

1400 26th Street, Vero Beach, FL 32960, USA
☎ +1 772 778-8896, 800 810-8896
Fax: +1 772 778-8289
E-Mail: sales@tampoprint.com
http: www.tampoprint.com

TAMPOPRINT® IBERIA S.A.U.

c/Caspe 127-135 local B, 08013 Barcelona, SPAIN
☎ +34 93 2327161
Fax: +34 93 2471500
E-Mail: tampoprint@tampoprint.es
http: www.tampoprint.es



The reproduction of trademarks and brands used in this brochure, even if not explicitly expressed, does not justify the assumption that such names or symbols may be considered as free as defined by the Trademark Act and may therefore freely be used. The rights are the property of the respective owner.

TAMPOPRINT® products are permanently updated to keep pace with the latest technological developments. For this reason, figures and descriptions are non-binding. Our machines are manufactured based on the currently valid European Machinery Directives as well as the European product standards EN 1010 - 1 and EN 1010 - 2.

Subject to alterations! ©Copyright