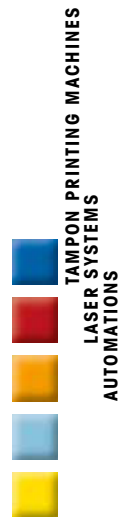


AUTOMATIONS

CLOSURES



Global partner for process solutions



Rotary tampon printing

Laser marking



Technologies for your future
made in germany

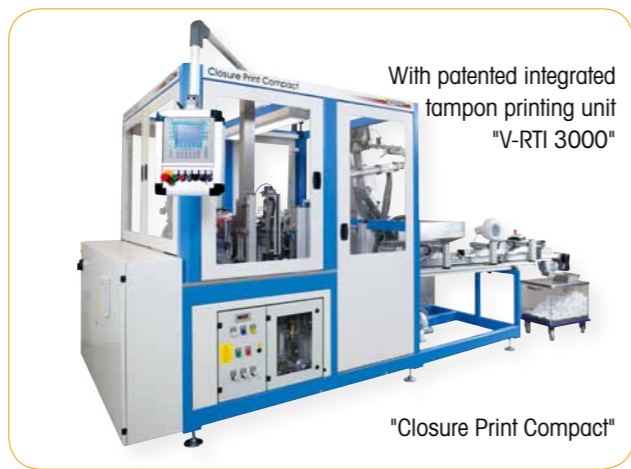
ORIGINAL

TAMPOPRINT®

Tampon printing machines
ALFALAS® Laser systems
Automations



"Rotoprint" 3-lane with integrated cooling at the wheel



With patented integrated tampon printing unit "V-RTI 3000"

"Closure Print Compact"



"Continua"

"Closure Print"



Laser marking

"MOF-PROMO"

TAMPOPRINT® - Your system partner!

For over 30 years TAMPOPRINT® AG has been your established partner of the beverage and caps manufacturing sector and their suppliers.

Our premium full automations are daily printing and laser-marking millions of caps worldwide.

Today our high know-how distinguishes us and makes it possible to supply you with decorating and marking solutions with our rotary tampon printing and laser marking technology.

Our tampon printing and laser automations meet highest quality requirements for the applications in multi-shift operations with high throughput. As an expert for special solutions our project planning draws on long-standing years of experience.

Our rotary tampon printing automations offer highest precision with the print image registration on convex, round or flat parts, one- or multi-colour.

Additionally we offer with our trademark ALFALAS® the laser marking "Mark on the Fly" – bottle caps marking for contest and promotion campaigns.

Our automations meet the highest aspirations of modern industrial products "Made in Germany".



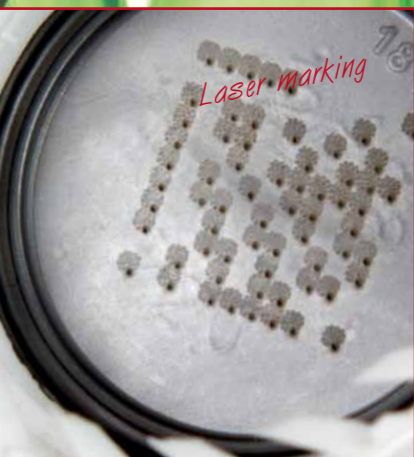
"Rotary" - tampon printing



"Rotary" - tampon printing



"Rotary" - tampon printing



Laser marking



Laser marking



Laser marking

"Rotoprint" rotary tampon printing

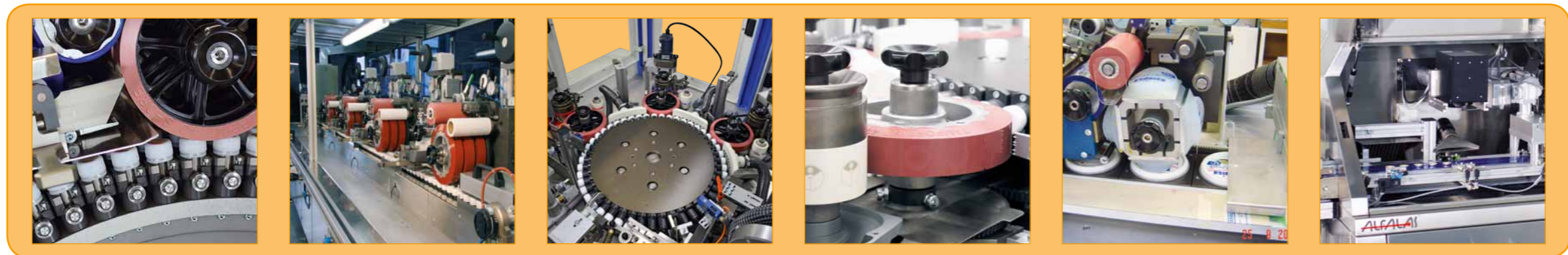
"Continua" rotary tampon printing

"Closure Print Compact" rotary tampon printing

"Closure Print" rotary tampon printing

"Continua 120" rotary tampon printing

"MOF-PROMO" ALFALAS® laser automation



High performance automated systems TAMPOPRINT® AG since 1981.



Tampoprint rollers for all applications
In-house production



Print ready cliché cylinders
In-house production with highest technology



Tampoprint inks, exclusive for TAMPOPRINT®,
matched for the rotary tampoprinting

Standardised fully automatic systems	"Closure Print Compact"	"Closure Print"	"Rotoprint"	"Continua"	ALFALAS® "MOF-Promo"
Decoration area bottle caps	Top side	Top side	Top side	Top side	Top side, liner, circumference
Marking technology	Rotary tampoprinting	Rotary tampoprinting	Rotary tampoprinting	Rotary tampoprinting	Laser marking
Bottle caps Ø mm (PP, PE, HDPE)	28 - 48	28 - 48	28 - 48	28 - 48	28 - 30
Number of colours	1 - 3	1 - 3	1 - 3	2 - 6	1
Output/h bottle caps Ø 28 - 33 mm					
Output/h 1-lane max.	35.000	45.000	-	-	150.000
Output/h 2-lane max.	-	-	120.000	120.000	-
Output/h 3-lane max.	-	-	180.000	180.000	-
Output/h 4-lane max.	-	-	-	240.000	-

Options

- ✓ Water cooling at the wheel "Rotoprint" (only with dual-lane)
- ✓ Print image control / camera systems
- ✓ Customer specified feed system
- ✓ Customer specified octabine / filling systems
- ✓ Cleaning systems for cliché cylinders
- ✓ Conversion systems for varying bottle cap systems

Trademarks of TAMPOPRINT® AG:



Dealer:



TAMPOPRINT® AG

Lingwiesenstraße 1
70825 Korntal-Münchingen, GERMANY
☎ +49 7150 928-0
Fax: +49 7150 928-400
E-Mail: info@tampoprint.de
"Ventes et Affaires Françaises"
☎ +49 7150 928-144
Fax: +49 7150 928-432
E-Mail: ventes@tampoprint.de
http: www.tampoprint.de

TAMPOPRINT® INTERNATIONAL CORP.

1400 26th Street, Vero Beach, FL 32960, USA
☎ +1 772 778-8896, 800 810-8896
Fax: +1 772 778-8289
E-Mail: sales@tampoprint.com
http: www.tampoprint.com

TAMPOPRINT® IBERIA S.A.U.

c/Caspe 127-135 local B, 08013 Barcelona, SPAIN
☎ +34 93 2327161
Fax: +34 93 2471500
E-Mail: tampoprint@tampoprint.es
http: www.tampoprint.es



The reproduction of trademarks or brands used in this brochure, does not, even if not explicitly expressed, justify the assumption that such names or symbols may be considered as free as defined by the Trademark Act and may therefore freely be used. The rights remain the property of their respective owners.

TAMPOPRINT® products are permanently updated to keep pace with the latest technological developments. Representations and descriptions are therefore not binding. Our machines are manufactured based on the currently valid European Machinery Directives as well as the European product standards EN 1010 - 1 and EN 1010 - 2.

Subject to alterations! ©Copyright